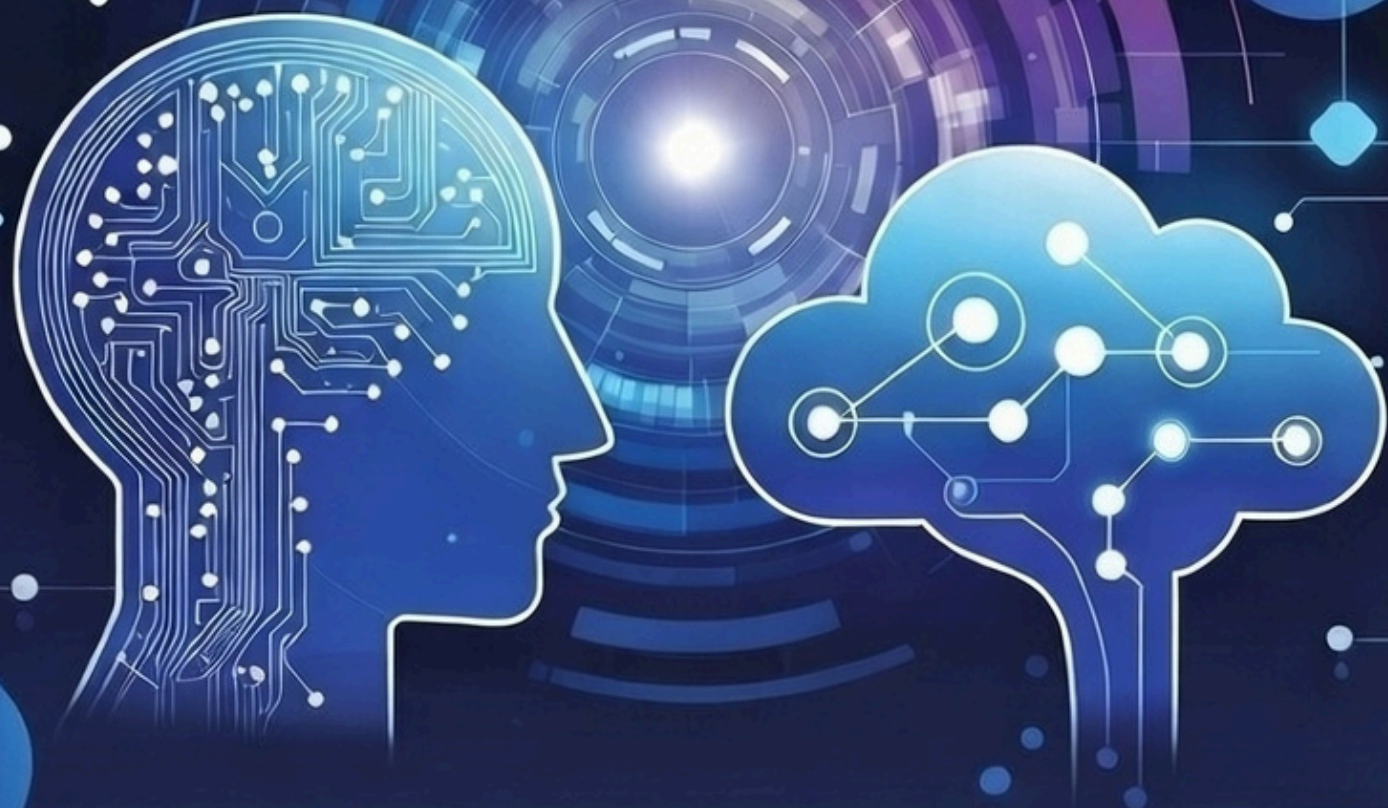


# AI Transformation

Exploring the Frontiers of  
Artificial Intelligence



# NEWSLETTER

# AI TRANSFORMATION TEAM

Issue 1 - Q2 2026

Announcing the Launch of the AI  
Champion Program

## Introducing the AI Champion Program

We are thrilled to announce the official launch of the AI Champion Program—a transformative initiative dedicated to empowering staff and igniting innovation throughout our institution. This program forms a cornerstone of our ongoing mission to harness the power of artificial intelligence in both academic and administrative settings, supporting our commitment to cutting-edge technology and collaborative progress.



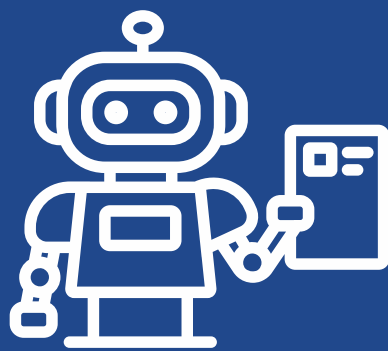
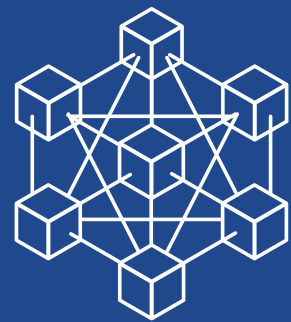


## Empowering Staff

Equipping team members to serve as AI catalysts within their units, sparking creativity and encouraging the practical adoption of AI tools.

## AI Champion Network

Establishing a robust internal network of AI Champions across academic and administrative units to foster knowledge sharing, collaboration, and cross-unit innovation.



## Discover the AI Tools Hub

Easy access to safe, approved AI tools. The new AI Tools Hub organises them into categories — Teaching & Learning, Productivity & Office Work, Multimedia & Design, and Research & Data — each with use cases and privacy notes.

## Long-term AI Transformation

Paving the way for a sustainable AI transformation journey by integrating AI into daily work and learning across our institution.



# Interview with the Director



## Professor William Lee on AI Transformation at HKU SPACE

In a recent interview, Professor William Lee, Director of HKU SPACE, shared his clear vision for the future of artificial intelligence at our institution.

### Strategic Goals for 2025–2030

Professor Lee explained that the school's new strategic plan places strong emphasis on using AI and technology to enhance both teaching and learning as well as administrative operations. "AI is not a fad or a catchword," he stated. "It is here to stay, and we have a duty to prepare our teachers and students for the future."

He highlighted two main objectives: helping students develop future-ready skills to increase their employability, and improving efficiency in daily school operations.

### Real Example: AI-Generated Corporate Video

As a concrete demonstration, Professor Lee pointed to the recent corporate video created entirely by the IAU team using AI. What used to be outsourced is now produced in-house, saving costs while allowing colleagues to develop valuable new creative and technical skills. "Our team had to think about storytelling, design, and editing — these are skills they now own," he said.

## The Human Element in Education

While AI enables more personalized learning through tools like chatbots, Professor Lee stressed that teachers remain essential. AI may handle routine tasks and knowledge delivery, but human teachers provide the nurturing, empathy, ethics, and mentorship that technology cannot replace.

## Vision for Human-AI Partnership

Professor Lee's ideal future is one of seamless coexistence. He believes AI should free people from repetitive work so they can focus on creative, strategic, and meaningful tasks. "We become designers of our own path," he remarked. The goal is a powerful interface between human intellect and artificial intelligence.

## Support Through Champions

He expressed full support for the AI Transformation Team and the new AI Champion Program, noting that in a large organization, change must reach every unit. The Champions will help cascade initiatives, collect feedback, and overcome challenges together.

Professor Lee ended with an encouraging message: "The evolution of technology is part of human nature. Come on board. We will support you, and let's learn together."



# AI Chat Platform: Milestones & Highlights

HKU SPACE's AI Chat platform is now a core part of how we work and learn.

- Staff Rollout (June 2025): Staff embraced multiple LLMs (DeepSeek, ChatGPT, Grok) for document creation, meetings, and daily tasks — feedback is overwhelmingly positive!
- Student Launch (September 2025): Full-time CC and HPSHCC students joined; by late November they made up 56% of all interactions!
- Seamless integration with Learner Portal & SOUL, plus mobile access and full support.

The team continues monitoring usage and feedback to roll out even more enhancements soon.

## Training Corner – Start Your AI Journey Today!

### GenAI Workshop Series



Hybrid programme by the Maisy Ho Centre for Teaching and Learning & Research and Educational Unit.

**Topics:** classroom engagement, innovative curriculum design, assessment, ethical AI use, and immersive technologies (VR & Metaverse).

CPD points for full-time staff.

Sessions at Admiralty Learning Centre + Zoom.

### Accelerating Skills with Microsoft ESI



Instructor-led training on Microsoft 365 Copilot, Azure AI, cloud, and security – in partnership with Microsoft and Infocan. Register now via ITSU!



# AI TRANSFORMATION

Thank you for reading

Thank you for joining us on this journey through the latest advancements in AI. Stay tuned for more insights and updates in our next issue!

